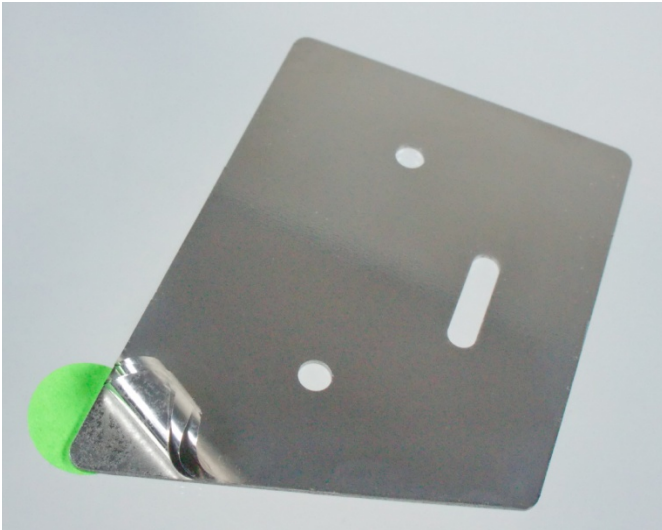


PRESS RELEASE

Supply System/ Manufacturing Technology/ Mechanical Engineering/ Metalworking/ Maintenance

The quick and easy way to precisely 10 micrometres

Laminum[®] HP2 shims from Georg Martin simplify the maintenance of clamping device bridge supports



Used for service work at STAMA: high-precision Laminum HP2 laminated shims from MARTIN with 20 sheet metal films with a thickness of 0.05 mm and 5 with a thickness of 0.01 mm

tailor-made to the customer's specifications as semi-peeled segments with drilled holes. The use of Laminum HP2 from MARTIN considerably simplifies and speeds up the maintenance of the bridge supports in the STAMA processing centres without compromising precision. Where the fitting of shims used to involve considerable machine downtime while the shims were planed to the right thickness, all the fitter has to do now is peel off the shim to the desired thickness by hand and insert it in the correct position.

MARTIN specializes in the manufacture of high-precision shims of this kind made from peelable, packaged and solid metal sheets. With its own development department and modern machinery, the company can supply compensation and fitting elements of this kind in numerous material combinations and in any shape and size specified by the customer. The ready-to-use washers and shims reduce assembly time and simplify maintenance. They also make it possible to dispense with mechanical adjustment, such as the planing work that STAMA used to have to perform.

Dietzenbach, November 2013. – STAMA's (www.stama.de) vertical multiple-spindle processing centres enable the highly productive parallel processing of up to eight identical workpieces in one workroom. Central components of the machine are the bridge supports which hold several structurally identical clamping systems whose common neutral point is factory set with a precision of at least 0.01 mm. To guarantee this high level of precision even during servicing, i.e. when performing regular, scheduled maintenance on the workpiece supports, STAMA recently decided to use customized shims from MARTIN.

These are high-precision laminated metal sheets of the type Laminum[®] HP2. The manually peelable shims consist of 20 sheet metal films with a thickness of 0.05 mm and 5 with a thickness of 0.01 mm. Shim specialist MARTIN supplies the shims



Multiple clamping system on bridge support: the STAMA MC 536 TWIN spindle milling machine in the 5-axis processing of wheel mounts. The spindle spacing here is 600 mm.